

# Updates on Open Wound Management

Elizabeth Swanson, DVM, MS, DACVS-SA  
Associate Professor, Small Animal Surgery

1

---

---

---

---

---

---

---

---

## Wound Healing: A Review

The diagram illustrates the three phases of wound healing in cross-section. The **Inflammatory Phase** shows a wound with a blood clot, fibrin mesh, and infiltrating inflammatory cells like neutrophils and macrophages. The **Proliferative Phase** shows the formation of new tissue, including granulation tissue, fibroblasts, and new blood vessels. The **Remodeling Phase** shows the maturation and strengthening of the wound tissue.

2

---

---

---

---

---

---

---

---

## Inflammatory Phase

1. Platelet aggregation & clot formation
2. Recruitment of neutrophils and monocytes
3. Wound debridement

- Starts within seconds of injury
- Lasts 3-7 days after injury

3

---

---

---

---

---

---

---

---

## Proliferative Phase

- 1. Formation of granulation tissue
- 2a. Epithelial growth over new granulation tissue
- 2b. Contraction of wound edges

- Starts 3-5 days after injury
- Lasts until wound is closed

4

---

---

---

---

---

---

---

---

## Remodeling Phases

Mature connective tissue replaces granulation tissue to form a scar

- Begins when wound is closed
- Ends when scar is remodeled
- Can last up to 2 years

5

---

---

---

---

---

---

---

---

## Tying It Together

Open Wound Management

- Methods to support/enhance natural wound healing process

Objective

- Convert contaminated wound to clean wound for closure

6

---

---

---

---

---

---

---

---

## What To Do First...

- Stabilize the patient
  - Assess and treat life-threatening injury
  - Cover wound until ready to treat
- Provide pain relief
  - Sedation may not be possible if unstable
  - Opioid for pain may provide adequate sedation
  - Local anesthetics should not penetrate wound bed to avoid bacterial spread

---

---

---

---

---

---

---

---

7

## Six Basic Steps of Wound Care

1. Prevent further wound contamination
2. Clean the wound = Lavage and Debride
3. Probe depth of wounds
4. Provide ideal wound environment
5. Promote a viable vascular bed
6. Select appropriate closure

---

---

---

---

---

---

---

---

8

## Wound Preparation

- Wear exam gloves
- Temporarily close or pack wound
  - Sterile water-soluble lubricant in wound
  - Or tack skin flap over moist sterile gauze
- Clip surrounding area w/ wide margins
- Surgical prep of surrounding skin
  - Do not let soap enter wound bed



---

---

---

---

---

---

---

---

9

## Surgeon Preparation

- Aseptic technique
  - Caps, masks, gowns, gloves
- Place sterile drapes



10

---

---

---

---

---

---

---

---

## Cleanse and Debride

- Lavage – copiously!
  - Lukewarm tap water
  - LRS
  - Saline
  - Occasionally w/ antiseptic

35 or 60 ml syringe  
+  
18 g needle/catheter  
=  
7-8 PSI



11

---

---

---

---

---

---

---

---

## Cleanse and Debride



- Povidone-Iodine
  - 1% Povidone Iodine (1:10 or less)
  - Residual activity 4-6 hr
  - Disadvantages
    - Forms inactive complexes with organic matter
    - Systemic absorption

12

---

---

---

---

---

---

---

---

## Cleanse and Debride

- Chlorhexidine
  - 0.05% Solution (1:40 dilution)
  - Activity less affected by organic material
  - Long residual activity
    - Increases with repeated applications
  - Cytotoxic at high concentrations
    - Corneal ulcers/ototoxic



13

---

---

---

---

---

---

---

---

## Cleanse and Debride

- Surgical Debridement
  - Layered
  - En Bloc



14

---

---

---

---

---

---

---

---

## Assessing Tissue Viability

- Color
  - Red/pink – alive
  - Purple/dusky – compromised
  - Black/gray - dead
- Bleeding
  - Bright red, oxygenated blood
- Monitor Daily
  - Can take up to 5 days for tissues to declare
  - Place drain to monitor deep tissues in closed wound

15

---

---

---

---

---

---

---

---

## Cleanse and Debride

- Chemical Debridement
- Indications:
  - Poor surgical risks
  - Minimal debridement of open wound
- Granulex V
  - Trypsin
  - Castor Oil
  - Balsam of Peru



16

---

---

---

---

---

---

---

---

## Cleanse and Debride

- Mechanical Debridement
  - Wet-to-dry or Dry-to-dry dressings
  - Devitalized tissue and foreign material trapped in primary bandage layer
  - Removed when bandage removed
  - Nonselective

17

---

---

---

---

---

---

---

---

## Sampling for Cultures

- AFTER lavage
- Techniques
  - Swab – may miss biofilm bacteria
  - Tissue – collect while debriding, multiple
  - [squeeze wound fluid, then swab]
- +/- Molecular bacterial identification
- Treating what is left in the wound

18

---

---

---

---

---

---

---

---

## Bandages

- Sterile Primary Layer
  - Maintains moist wound bed
  - Promotes/supports wound healing
    - Choice based on phase of wound healing, amount of exudate, location and depth of wound
  - Functions: protection, debridement, delivery of medications, passage of drainage, or occlusive seal

---

---

---

---

---

---

---

---

19

## Bandages

- Moist Wound Healing
  - Wound fluid contains WBCs, enzymes, cytokines, growth factors needed for healing
    - Work best in moist environment
  - Goal: keep surface of wound moist with wound fluid while removing exudate
    - Promotes optimal function of all wound components
    - Fewer bandage changes
    - Decreased cost

---

---

---

---

---

---

---

---

20

## Primary Layer

- Non-Adherent Dressings
  - Purpose: Protection, Maintain moist wound environment
  - Nonadherent (e.g., Telfa®) pad
    - No necrotic debris (proliferative phase)
    - No effusion
    - Protect sutured incisions
    - Protect mature granulation tissue and migrating epithelium




---

---

---

---

---

---

---

---

21

## Primary Layer

- Non-Adherent Dressings
  - Purpose: Protection, Maintain moist wound environment
- Hydrogels
  - Promote debridement, granulation, and epithelialization
  - Minimal to no wound effusion
  - All phases



22

---

---

---

---

---

---

---

---

## Primary Layer

- Non-Adherent Dressings
  - Purpose: Protection, Maintain moist wound environment
- Vaseline-Impregnated Gauze
  - Adaptic®
  - Maintain moist wound bed
  - Granulation tissue
  - All phases



23

---

---

---

---

---

---

---

---

## Primary Layer

- Adherent Dressings
  - Purpose: Debridement, Removal of Exudate
  - Saline-moistened gauze or dry gauze on wound surface
  - Stack of dry gauze or lap pads overlying
  - Wound fluid absorbed into dry layers
  - Gauze sticks to wound surface as it dries
  - Peels off wound surface at removal
- STOP USING once healthy granulation tissue is present



24

---

---

---

---

---

---

---

---

## Primary Layer

- Adherent Dressings
  - Wet-to-dry
    - For removal of necrotic tissue and/or viscous exudate
    - Moistened gauze on wound
  - Dry-to-dry
    - Loose necrotic debris and low-viscosity, high volume exudate
    - Dry gauze on wound




---

---

---

---

---

---

---

---

25

## Primary Layer

- Osmotics – for infected, necrotic, or heavily exudative wounds
  - Hypertonic saline, sugar, manuka honey
  - Stop once wound is clean and covered by healthy, robust granulation bed with minimal exudate
- Hydrocolloids, Foams, Alginates – highly absorptive, adhere to surface
  - For clean wounds only with large amount of drainage
  - Can absorb large amounts of fluid, decreases bandage changes

---

---

---

---

---

---

---

---

26

## Primary Layer

- Nitric oxide releasing wound dressings (Noxsano®)
  - Hydrocolloids and hydrogels
  - Chemoattractant: PMNs and Monocytes
    - Promotes debridement
  - Stimulates angiogenesis and fibroplasia
    - Earlier granulation tissue formation
  - Faster wound healing
  - Impact on resistant infections
- All stages/low to moderate exudate




---

---

---

---

---

---

---

---

27

## Primary Layer

- Negative Pressure Wound Therapy
- Benefits
  - Removes excessive exudate
  - Reduces edema
  - Increases vascularity and perfusion
  - Decreases inflammatory response
  - Improves skin elasticity

28

---

---

---

---

---

---

---

---

## Primary Layer

- Fish Xenograft
  - Decellularized Codfish (Kerecis®)
  - Tilapia Skin
- Provides matrix for cellular ingrowth
  - Fibroblasts and keratinocytes
  - Retains omega-3 Fas
- Pain control
- Barrier



29

---

---

---

---

---

---

---

---

## Beyond the First Day

- Bandage changes
  - Type of bandage
  - Amount of exudate
- Monitor tissue viability
  - Debride as needed
- Monitor for signs of infection
- Monitor progress of healing
  - Adjust primary layer accordingly

30

---

---

---

---

---

---

---

---

## Beyond the First Day

- Inflammatory
  - Support wound debridement
  - Absorb or allow exudate to pass through
- Proliferative
  - Support granulation tissue formation
  - Support wound contraction and epithelialization
  - Maintain moist wound environment
    - Remove excess exudate -or- add fluid back

31

---

---

---

---

---

---

---

---

## Beyond the First Day

- Evaluating Wound Health
- Appearance of healthy granulation tissue



32

---

---

---

---

---

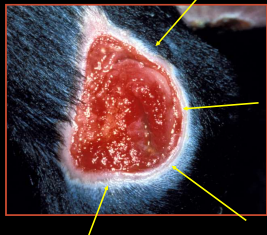
---

---

---

## Beyond the First Day

- Evaluating Wound Health
- Epithelialization
  - 1 mm/day



33

---

---

---

---

---

---

---

---

### Beyond the First Day

- Evaluating Wound Health
- Unhealthy Wound



34

---

---

---

---

---

---

---

---

### Beyond the First Day

- Evaluating Wound Health
- Contracture
  - When wound contraction distorts and adjacent orifice or affects joint function



35

---

---

---

---

---

---

---

---

### Beyond the First Day

- Reassess non-progressive wounds
  - Infection
  - Pressure point
  - Excessive movement
  - Repetitive trauma
  - Equalized forces
- Treat accordingly

36

---

---

---

---

---

---

---

---

## Beyond the First Day

- Reassess non-progressive wounds
  - Infection → culture, treat
  - Pressure point → offload\*
  - Excessive movement → stabilize, +/- drain
  - Repetitive trauma → protect
  - Equalized forces → reconstruction

37

---

---

---

---

---

---

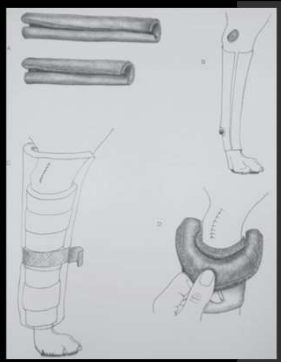
---

---

## Beyond the First Day

- Foam pipe insulation bandages
  - Offloads elbows
  - Hocks too!

• Pavletic M. *J Am Vet Med Assoc* 2011;239:1225-1231



38

---

---

---

---

---

---

---

---

## Buddy

39

---

---

---

---

---

---

---

---



40

---

---

---

---

---

---

---

---



41

---

---

---

---

---

---

---

---



42

---

---

---

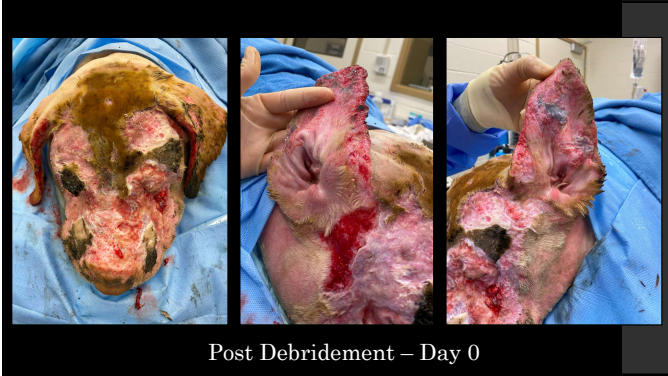
---

---

---

---

---



43

---

---

---

---

---

---

---

---



44

---

---

---

---

---

---

---

---



45

---

---

---

---

---

---

---

---



46

---

---

---

---

---

---

---

---



47

---

---

---

---

---

---

---

---



48

---

---

---

---

---

---

---

---



49

---

---

---

---

---

---

---

---



50

---

---

---

---

---

---

---

---



51

---

---

---

---

---

---

---

---



52

---

---

---

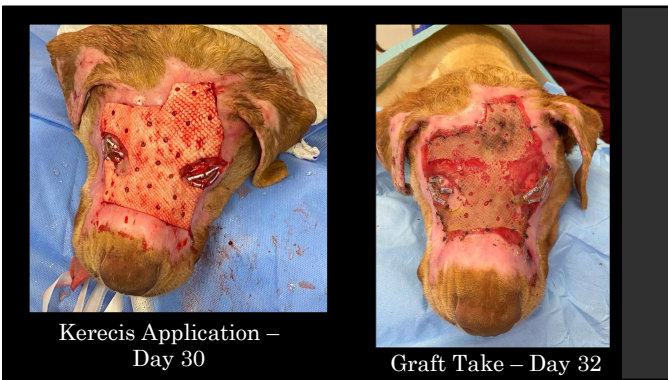
---

---

---

---

---



53

---

---

---

---

---

---

---

---



54

---

---

---

---

---

---

---

---



55

---

---

---

---

---

---

---

---



56

---

---

---

---

---

---

---

---



57

---

---

---

---

---

---

---

---